

Quick Guide to Isolera™

Preparation

1. Turn system on
2. Press **Chemistry**, the UV lamp turns on at this time
3. The 7.5 min warm-up can be skipped
4. If needed, press **Solvents** tab to add/replace solvents
5. Press **Status**



How Much are You Purifying?

100 mg or less; no TLC

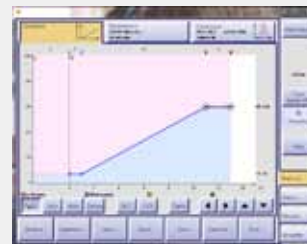
1. Press **Method**
2. Press **Open**
3. Select **User**
4. Select a **Method** by cartridge size or TLC solvent strength
5. Press **OK**



Choose a cartridge based on grams of silica.

More than 100 mg; one TLC Plate

1. Press **Method**
2. Press **Optimize**
3. Press **Open TLC to Linear Gradient Editor**
4. Enter all information on the page.
Rf product: TLC results for the desired product.
Additional Rf's are for the next nearest spots on the TLC plate.
5. Press **OK**



Choose a cartridge based actual load capacity.

More than 100 mg; more than one TLC plate Fastest purification, least solvent use

1. Press **Method**
2. Press **Optimize**
3. Press **Open TLC to Step Gradient Editor**
4. Enter Rf factors from 1 to 10 TLC plates
5. Press **Gradient and Peaks Predicted Results**
6. Edit the gradient as desired
7. Press **Cartridge Selection**
8. Enter **Sample Mass** in milligrams (mg)
9. Press **Cartridge**
10. Select cartridge based on capacity and run time
11. Press **OK**



Choose a cartridge based on actual load capacity and predicted run time.

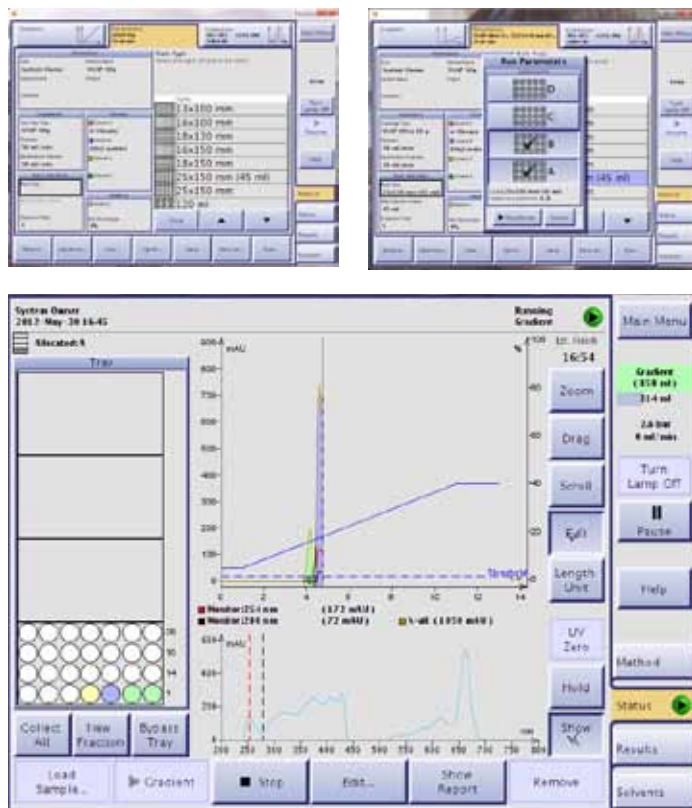
Quick Guide to Isolera™

Purification

1. Install the selected cartridge
2. Place fraction rack(s) and tubes in fraction collector
3. Press **Parameters**
4. Choose the rack type
5. Press **Run...**
6. Select rack(s) to collect fractions
7. Press **Equilibrate**. Isolera will now equilibrate the cartridge. Equilibration flow rates can be increased to over 100 mL/min in most cases.
8. When equilibration completes, press **Load Sample**
9. Load the mixture to be purified to the cartridge
10. Press **Close**
11. Press **Gradient**

During the Purification

- Assess purity of fractions in real-time by monitoring the UV spectrum
- Change any method parameter during the run



Review Results

Check for purity by reviewing the UV spectrum for peaks. Consistently shaped UV spectra means that the fraction is pure.

