

Site Requirements Biotage® Initiator+

Dear Valued Customer,

The following document will assist you in the preparation of your laboratory for a successful installation of Biotage® Initiator+. Please read and sign where indicated at the end of this document. Your signature validates that you have understood our requirements. We cannot guarantee a complete installation or demonstration if the requirements are not met. If you have any questions please don't hesitate to contact Biotage 1-Point support.

Customer Responsibility

Make sure your site meets this specification, including: the necessary space, electric outlets, gases, tubing required for the successful installation of the instrument. Users of the instrument should be present throughout the installation and familiarization services; otherwise, they will miss important operational, maintenance and safety information.

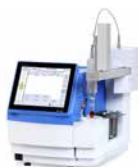
System Specification

Weight and Dimensions



INITIATOR MICROWAVE SYNTHESIZER

Width 14.4" (36.5 cm)
Depth 16.7" (42.2 cm)
Height 16.6" (42.1 cm)
Weight 49 lbs (22.2 kg)



INITIATOR EIGHT MICROWAVE SYNTHESIZER

Width 15.7" (40 cm)
Depth 19.7" (50 cm)
Height 22.8" (58 cm)
Weight 61.7 lbs (28 kg)



INITIATOR SIXTY MICROWAVE SYNTHESIZER

Width 24.6" (62.5 cm)
Depth 16.6" (42 cm)
Height 18.5" (47 cm)
Weight 75 lbs (34 kg)

Fume Hood/ Ventilation System

The system must be either connected to a well-ventilated fume hood or an equivalent enclosure to avoid risk of exposure to harmful vapours



Ambient Air

The system must be located in an area where the ambient air is clean and dry. No emission of solid particles or smoke in the air by adjacent equipment is allowed. The level of dust and humidity should be comparable to that of normal laboratory spaces.

Electrical Supply

220 to 240 V~, 50/60 Hz (T8A) or
100 to 120 V~, 50/60 Hz (T8A)
See the label at the rear of the system.

Operating Temperature and Humidity

18 °C to 32 °C (64.4 °F to 89.6 °F)
20–95% RH

Cooling (only for organic Synthesis)

Pressurized air supply: > 60 L/min (2.1 cubic feet/min), 2.5 to 4.0 bar (0.25 to 0.40 MPa; 36 to 58 PSI)

When running in organic synthesis mode, the system must be connected to a supply of dry pressurized air.

If the air contains liquids, the microwave reaction vial may break during cooling and contents may erupt, possibly resulting

in personal injury and loss of materials.

External Fire Protection

External fire protection should be installed according to local regulations for equipment operating unattended.

Gas and Connection Requirement

Pressurized air supply: > 60 L/min (> 2.1 cubic feet/min), 2.5 to 4.0 bar (0.25 to 0.40 MPa; 36 to 58 PSI)

The Initiator+ system must be connected to a supply of dry pressurized air. If the air contains liquids, the microwave reaction vial may break during cooling and contents may erupt, possibly resulting in personal injury and loss of materials. The air does not encounter the vial contents and therefore House Air or Nitrogen can be used.

- » If House Air is going to be used for cooling, it is recommended that a Drierite™ desiccant cartridge be used. It must be rated for 36 – 58psi (2.1 cubic feet/min). An example of a Drierite™ cartridge that can be used is Sigma catalog #Z112879.
- » If Nitrogen is going to be used for cooling, you do not need a Drierite™ desiccant cartridge as Nitrogen is normally dry.

Biotage® Initiator+ system is provided with a regulator that will have a barbed fitting (see image). Note that four sizes of barbed fittings are provided which can accommodate many tubing sizes. The customer is responsible for providing the tubing necessary to connect the gas source to the barbed fitting. The tubing used must be flexible (so it can be attached to the barbed fitting) and be able to hold the pressure from the gas source. It is NOT recommended that vacuum tubing be used.

From gas source →



→ To Initiator+

✓ Check

Location

- Installation inside fume cabinet (note the support bars may have to be removed from the back of the cabinet if the fume cabinet is not deep enough – see page 1 for dimensions).
- Installation on bench (suitable ventilation required).

System Solvents

- Distilled Water
- Ethanol

Records

Print Name _____

Signature _____

Date _____

EUROPE

Main Office: +46 18 565900
 Fax: +46 18 591922
 Order Tel: +46 18 565710
 Order Fax: +46 18 565705
 order@biotage.com
 Support Tel: +46 18 56 59 11
 Support Fax: + 46 18 56 57 11
 eu-1-pointsupport@biotage.com

NORTH & LATIN AMERICA

Main Office: +1 704 654 4900
 Toll Free: +1 800 446 4752
 Fax: +1 704 654 4917
 Order Tel: +1 800 446 4752
 Order Fax: +1 704 654 4917
 ordermailbox@biotage.com
 Support Tel: +1 800 446 4752
 us-1-pointsupport@biotage.com

JAPAN

Tel: +81 3 5627 3123
 Fax: +81 3 5627 3121
 jp_order@biotage.com
 jp-1-pointsupport@biotage.com

CHINA

Tel: +86 21 68162810
 Fax: +86 21 68162829
 cn_order@biotage.com
 cn-1-pointsupport@biotage.com

KOREA

Tel: +82 31 706 8500
 Fax: +82 31 706 8510
 korea_info@biotage.com
 kr-1-pointsupport@biotage.com

INDIA

Tel: +91 11 45653772
 india@biotage.com

Distributors in other regions
 are listed on www.biotage.com

Part Number: UI481

© 2021 Biotage. All rights reserved. No material may be reproduced or published without the written permission of Biotage. Information in this document is subject to change without notice and does not represent any commitment from Biotage. E&OE. A list of all trademarks owned by Biotage AB is available at www.biotage.com/legal. Other product and company names mentioned herein may be trademarks or registered trademarks and/or service marks of their respective owners, and are used only for explanation and to the owners' benefit, without intent to infringe.