

For Research Use Only. NOT for Use in Diagnostic Procedures.

# Extraction of Thyroid Hormones: T3, rT3 and T4 from Serum Using EVOLUTE® EXPRESS AX Plates Prior to LC-MS/MS Analysis

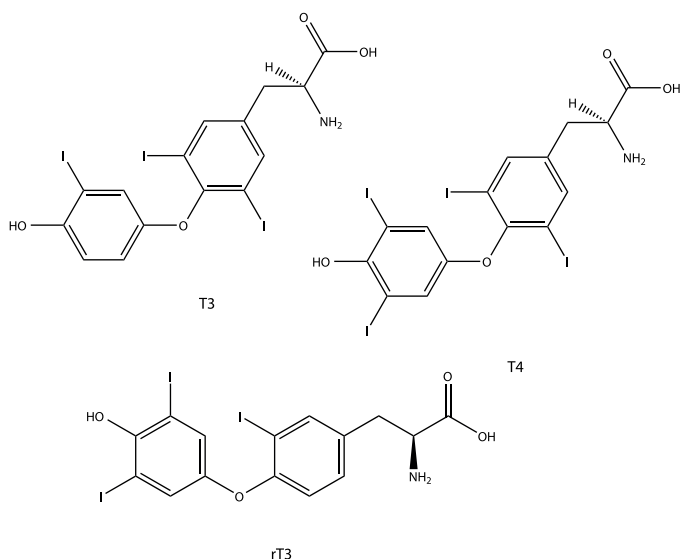


Figure 1. Structures of T3, rT3 and T4.

## Introduction

This application note describes a polymer-based strong anion exchange mixed-mode SPE protocol for the extraction of T3, rT3 and T4 from serum prior to LC-MS/MS analysis.

The method described in this application note demonstrates selective extraction of the thyroid hormones T3, rT3 and T4 from serum. 200  $\mu$ L of serum was extracted using the EVOLUTE® EXPRESS AX 30 mg fixed well plate format. High reproducible recoveries and low phospholipid content were observed, demonstrating limits of quantitation < 50 pg/mL.

## Analytes

Tri-iodothyronine (T3), reverse Tri-iodothyronine (rT3) and Thyroxine (T4).

## Sample Preparation Procedure

### Format

EVOLUTE® EXPRESS AX 30 mg fixed well plate, part number 603-0030-PX01.

### Serum Pre-treatment

To serum (200  $\mu$ L) add internal standard (D<sub>6</sub>-T3/rT3, 10  $\mu$ L of 25 ng/mL solution).

Add a further 100  $\mu$ L of a mixture of citric acid, ascorbic acid and DL-dithiothreitol (25 mg/mL) and vortex mix thoroughly.

**Note:** the use of these stabilizers prevents conversion of T4 to T3 and rT3 during extraction.

## Solid Phase Extraction

### Plate Conditioning

Condition each well with MeOH (1 mL).

### Plate Equilibration

Equilibrate each well with H<sub>2</sub>O (1 mL).

### Sample Loading

Load the entire volume of pre-treated sample.

### Wash 1

Elute interferences with 50 mM NH<sub>4</sub>OAc buffer, pH 9 aq (1 mL)

### Wash 2

Elute interferences with MeOH (1 mL).

### Wash 3

Elute interferences with 2% formic acid in DCM (v/v) (1 mL).

### Elution

Elute analytes with MeOH (500  $\mu$ L).

(Optional) Add 2  $\mu$ L of ethylene glycol to the collection plate and mix prior to evaporation.

### Post Elution

Evaporate at 40 °C in a stream of air or nitrogen using a Biotage® SPE Dry.

**Note:** The use of ethylene glycol helps to minimize non-specific binding to the plastic collection plate by avoiding complete drying during the evaporation procedure.

### Reconstitution

Reconstitute the sample with H<sub>2</sub>O/MeOH (50/50 (v/v), 150  $\mu$ L).

## UPLC Conditions

### Instrument

Waters ACQUITY I-Class

### Column

ACE EXCEL2 C18-AR UHPLC column (2  $\mu$ , 100 x 2.1 mm id)

### Mobile Phase

**A:** 2 mM ammonium acetate/0.1% formic acid (aq)

**B:** 2 mM ammonium acetate/0.1% formic acid/MeOH

### Flow Rate

0.4 mL/min.

**Table 1.** Gradient Conditions.

Time	% A	% B	Curve
0	40	60	1
3	23	77	6
3.1	40	60	1

Curve 1: Conditions in subsequent line initiated immediately once time passed. i.e. 40:60 resumed at 3 minutes.

Curve 6: Linear Gradient

### Injection Volume

10  $\mu$ L (partial loop with overflow)

### Sample Temperature

10 °C

### Column Temperature

40 °C

## Mass Spectrometry Conditions

### Instrument

Xevo TQ-S triple quadrupole mass spectrometer equipped with an electrospray interface for mass analysis.

### Desolvation Temperature

500 °C

### Ion Source Temperature

150 °C

### Collision Cell Pressure Temperature

3.7 e<sup>-3</sup> mbar

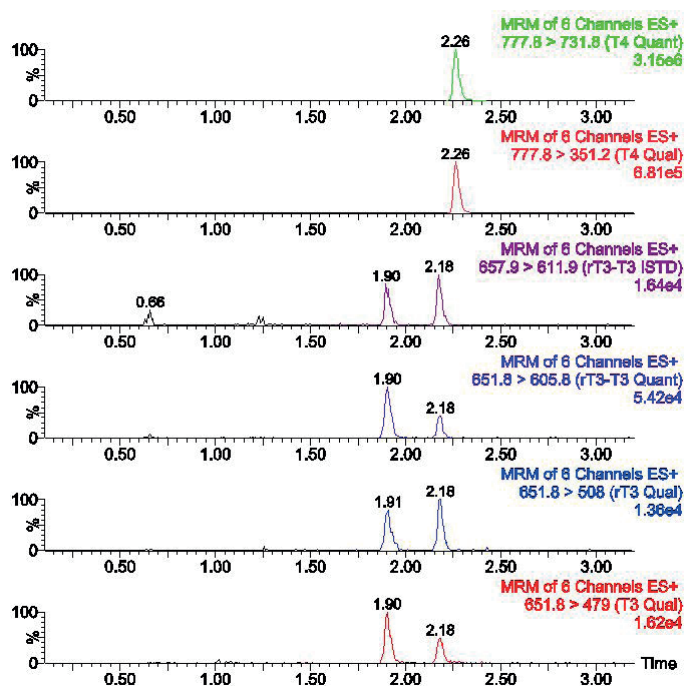
Positive ions acquired in the multiple reaction monitoring (MRM) mode:

**Table 2.** MRM Conditions (Qualifier ion details shown in parenthesis).

Compound	MRM Transition	Cone Voltage (V)	Collision Energy (eV)
T3	651.8 > 605.8 (651.8 > 507.8) (651.8 > 478.9)	50	22 (22) (35)
rT3	651.8 > 605.8 (651.8 > 507.8) (651.8 > 478.9)	50	22 (22) (35)
T3/rT3-d6 ISTD	657.8 > 611.8	50	22
T4	777.7 > 731.7 (777.7 > 351.0) (777.7 > 633.8)	50	25 (45) (23)

## Results

Good chromatographic separation of T3/rT3 and T4 was achieved in less than 3 minutes, as shown in Figure 2



**Figure 2.** Chromatographic separation of T3, rT3 and T4 from spiked serum at 50 pg/mL.

## Recovery

Stripped serum was spiked at various levels from 25–2000 pg/mL. High reproducible recoveries > 85% with corresponding RSDs < 10% were demonstrated. Typical recovery data at 2 ng/mL is shown in Figure 3.

## Calibration Curves

Calibration curves were generated using stripped serum spiked at concentrations from 25–1000 pg/mL. Good coefficients of determination were obtained for T3 and rT3 ( $r^2 > 0.99$ ). Residual endogenous levels of T4 contributing towards a substantial intercept affected calibration curve performance.

Calibration curves were run before and after multiple serum samples to demonstrate robustness of quantification using this method.

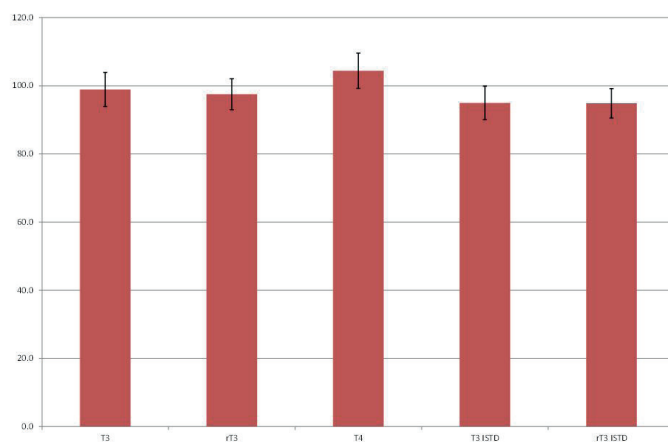


Figure 3. Recovery profile for thyroid hormones extracted at 2 ng/mL.

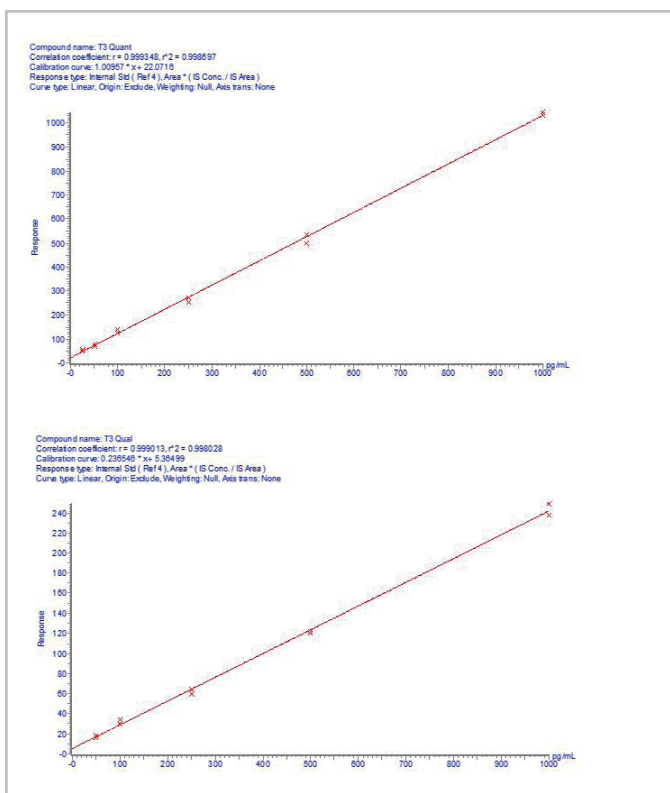


Figure 4. Spiked serum calibration curve demonstrating T3 linearity from 25–1000 pg/mL (curves run before and after real samples).

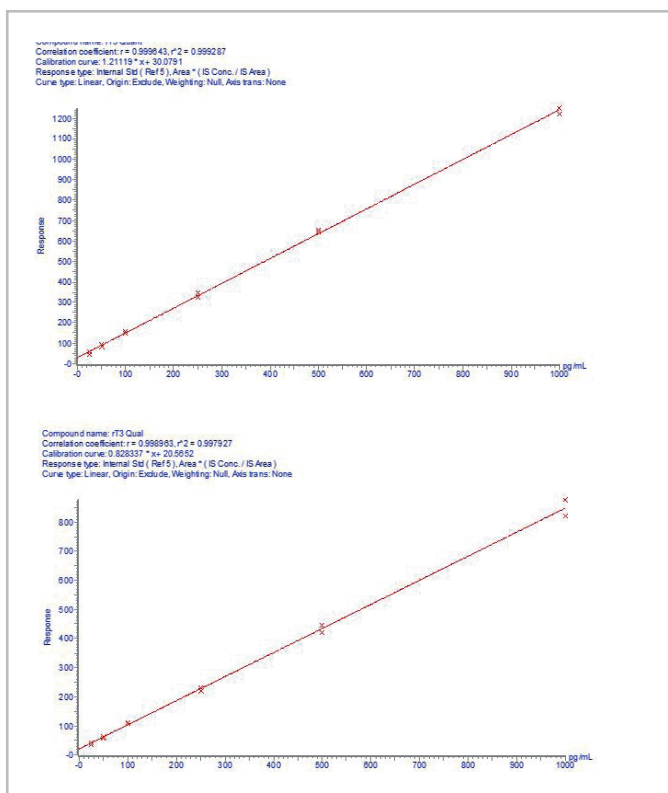


Figure 5. Spiked serum calibration curve demonstrating rT3 linearity from 25–1000 pg/mL (curves run before and after real samples).

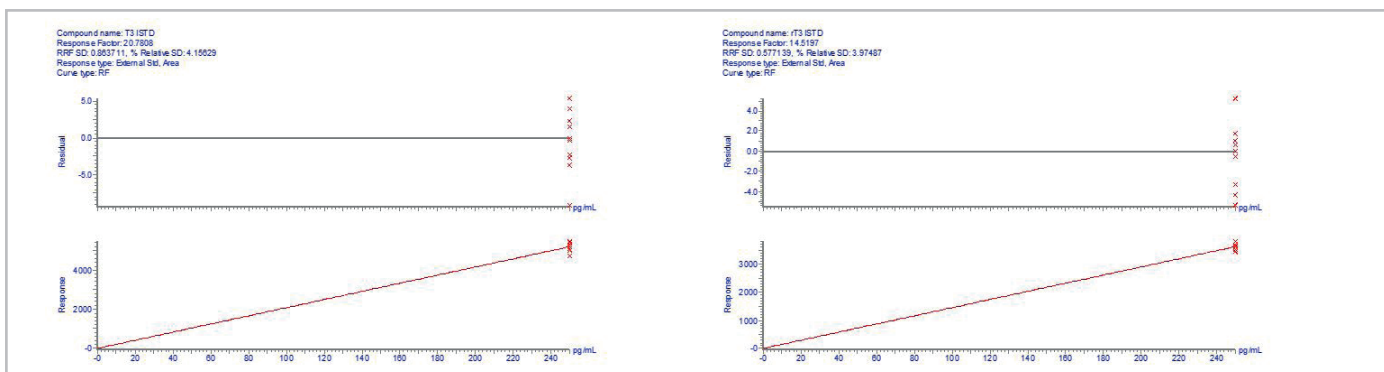
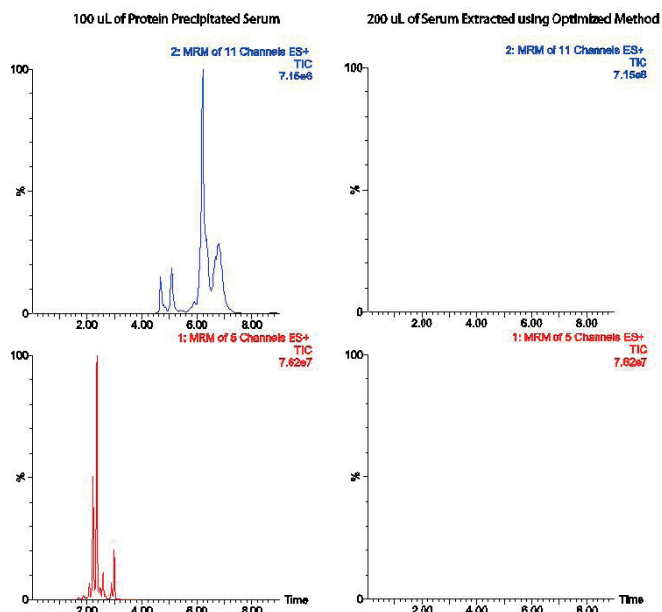


Figure 6. Plots demonstrating T3 and rT3 ISTD performance over calibration curves.

## Phospholipid Removal

Phospholipids were investigated to provide an indication of extract cleanliness. We investigated the most abundant phospholipids (selected from full scan, SIR and precursor ion scanning experiments) using MRM transitions monitoring the common 184 product ion. Figure 8 shows phospholipid content comparing protein precipitated serum, and serum extracted using the optimised extraction protocol.

The complete removal of matrix phospholipids improves assay robustness.



**Figure 7.** MRM TICs comparing phospholipid content (precipitated serum sample (L) and extracted serum sample (R))

## Additional Notes

1. Stabilizers are added to the sample at the pre-treatment stage prior to extraction to prevent conversion of T<sub>4</sub> into T<sub>3</sub>/rT<sub>3</sub> during the extraction procedure, which is otherwise possible under various pH conditions.
2. High pH conditions (pH 9) are used in wash 1 to ensure ionisation (de-protonation) of the carboxylic acid group (and suppress ionization of the amino group) during wash steps and therefore maintain full retention of the analytes on the EVOLUTE® EXPRESS AX strong anion exchange sorbent during the subsequent methanol wash.
3. An additional wash step using acidified dichloromethane (DCM) is incorporated to further clean up the extract, and improve robustness and reproducibility of the analytical method. Acid was required to give optimum matrix removal, and the use of DCM prevented analyte loss during this wash, despite the change in pH conditions neutralizing the carboxylic group and breaking anion exchange interaction. Analytes were not lost due to their low solubility in DCM.
4. Pure methanol can be used to elute the analytes following the rigorous wash protocol, due to the residual acidic conditions on the column. Analytes are eluted due to their high solubility in methanol.
5. T<sub>4</sub> is generally present at much higher levels than T<sub>3</sub>/rT<sub>3</sub>, and conversion of species can occur during sample storage, increasing the apparent levels of T<sub>3</sub>/rT<sub>3</sub>. In addition, conversion of T<sub>4</sub> to T<sub>3</sub>/rT<sub>3</sub> can also occur in the MS source, potentially leading to inaccurate quantification and iodine deposits in the MS system, so a good chromatographic separation of the species is essential. If T<sub>4</sub> is not being analysed, it is good practice to divert T<sub>4</sub> to waste prior to the MS.

## Buffer Preparation

1. Preservative mixture at 25 mg/mL: Citric acid, ascorbic acid and DL-dithiothreitol. Weigh 250 mg of each and dissolve in H<sub>2</sub>O. Make up to 10 mL in H<sub>2</sub>O.
2. 50 mM NH<sub>4</sub>OAc buffer at pH 9 (aq): Weigh 3.854 g and dissolve in H<sub>2</sub>O. Adjust pH to 9 with NH<sub>4</sub>OH (28–30% concentration) and make up to 1 L.
3. 2% formic acid in DCM: Take 98 mL of DCM and add 2 mL of formic acid (98% stock).
4. 2 mM ammonium acetate/o.1% formic acid (aq): Weigh 0.15416 g and dissolve in H<sub>2</sub>O. Add 1 mL of formic acid and make up to 1 L in H<sub>2</sub>O.
5. 2 mM ammonium acetate/o.1% formic acid/MeOH: Weigh 0.15416 g and dissolve in MeOH. Add 1 mL of formic acid and make up to 1 L in MeOH.

## Processing Conditions

### Positive Pressure

Process at approximately 1–2 psi.

### Vacuum Processing

Process at approximately -0.2 bar.

### Conditioning and Equilibration Steps

EVOLUTE® EXPRESS 96-well plates may be used without conditioning and equilibration steps. Evaluate the requirement for these steps during method development.

### Chromatographic Separation

- » It is important to get chromatographic separation of the T<sub>4</sub> from T<sub>3</sub>/rT<sub>3</sub> peaks as ESI sources induce de-iodination of the T<sub>4</sub> forming both T<sub>3</sub>/rT<sub>3</sub>.
- » Good chromatographic separation may also be achieved using acetonitrile in place of methanol as the organic modifier in mobile phase B, along with alternative HPLC column chemistry.

### Automated Extraction

The method described in this application note is compatible with automation using Biotage® Extrahera™. Contact Biotage for more information.

## Ordering Information

Part Number	Description	Quantity
<b>603-0030-PX01</b>	EVOLUTE® EXPRESS AX 30 mg Fixed Well Plate	1
<b>For Manual Processing</b>		
<b>121-9600</b>	Biotage® VacMaster-96 Sample Processing Manifold	1
<b>PPM-96</b>	Biotage® PRESSURE+ 96 Positive Pressure Manifold	1
<b>Evaporation</b>		
<b>SD-9600-DHS-EU</b>	Biotage® SPE Dry 96 Sample Evaporator 220/240V	1
<b>SD-9600-DHS-NA</b>	Biotage® SPE Dry 96 Sample Evaporator 100/120V	1

#### EUROPE

Main Office: +46 18 565900  
Toll Free: +800 18 565710  
Fax: +46 18 591922  
Order Tel: +46 18 565710  
Order Fax: +46 18 565705  
order@biotage.com  
Support Tel: +46 18 56 59 11  
Support Fax: + 46 18 56 57 11  
eu-1-pointsupport@biotage.com

#### NORTH & LATIN AMERICA

Main Office: +1 704 654 4900  
Toll Free: +1 800 446 4752  
Fax: +1 704 654 4917  
Order Tel: +1 704 654 4900  
Order Fax: +1 434 296 8217  
ordermailbox@biotage.com  
Support Tel: +1 800 446 4752  
Outside US: +1 704 654 4900  
us-1-pointsupport@biotage.com

#### JAPAN

Tel: +81 3 5627 3123  
Fax: +81 3 5627 3121  
jp\_order@biotage.com  
jp-1-pointsupport@biotage.com

#### CHINA

Tel: +86 21 2898 6655  
Fax: +86 21 2898 6153  
cn\_order@biotage.com  
cn-1-pointsupport@biotage.com

#### KOREA

Tel: + 82 31 706 8500  
Fax: + 82 31 706 8510  
korea\_info@biotage.com  
kr-1-pointsupport@biotage.com

Distributors in other regions are listed on [www.biotage.com](http://www.biotage.com)

Part Number: AN881.V.1

© 2017 Biotage. All rights reserved. No material may be reproduced or published without the written permission of Biotage. Information in this document is subject to change without notice and does not represent any commitment from Biotage. E&OE. A list of all trademarks owned by Biotage AB is available at [www.biotage.com/legal](http://www.biotage.com/legal). Other product and company names mentioned herein may be trademarks or registered trademarks and/or service marks of their respective owners, and are used only for explanation and to the owners' benefit, without intent to infringe. **FOR RESEARCH USE ONLY. NOT FOR USE IN DIAGNOSTIC PROCEDURES.**