

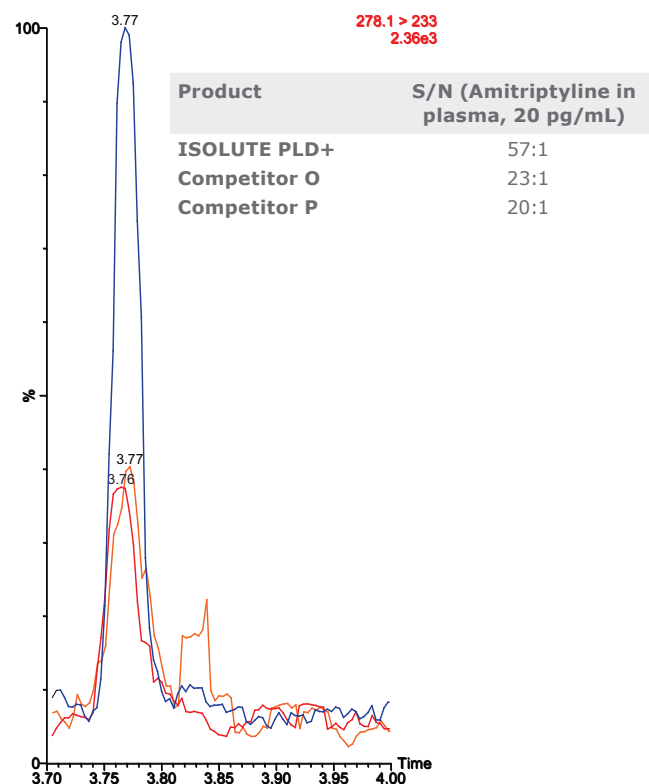
For Research Use Only. NOT for Use in Diagnostic Procedures.

## ISOLUTE® PLD+

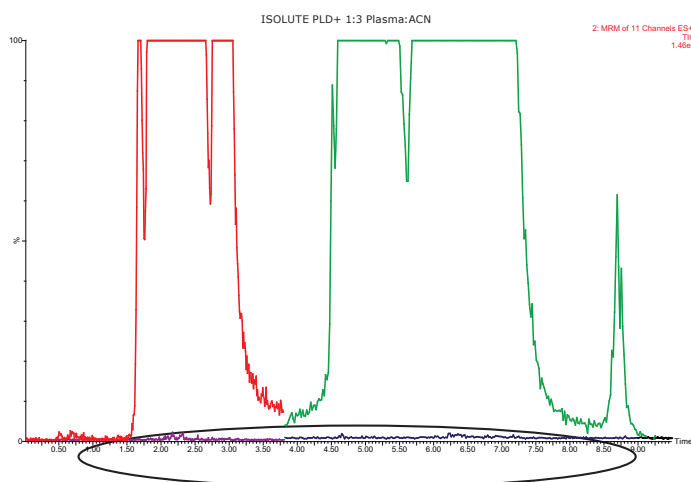
### Protein and Phospholipid Removal Products – Effortlessly Improve Analyte Sensitivity



ISOLUTE® PLD+ Protein and Phospholipid Removal plates and columns provide a very effective but extremely simple sample clean-up for LC-MS/MS analysis. Requiring next to no method development, ISOLUTE PLD+ can be integrated quickly and easily into routine workflow, increasing productivity and reducing instrument downtime. ISOLUTE PLD+ plates and columns remove >99 % of plasma proteins and phospholipids, the main causes of ion suppression, leading to cleaner extracts and increased sensitivity (signal-to-noise (S/N)) for a broad range of analytes.



**Figure 1.** Relative peak intensity, 20 pg/mL amitriptyline in plasma (Blue = ISOLUTE® PLD+, Orange = Competitor O, Red = Competitor P).



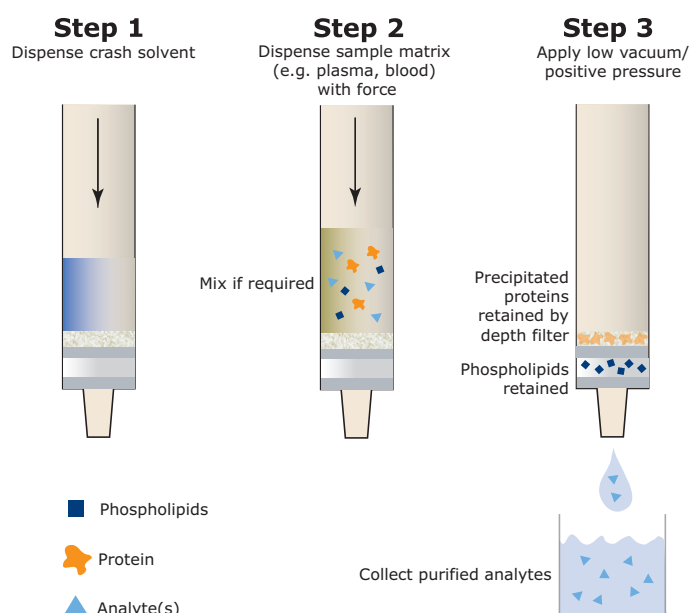
**Figure 2.** Levels of phospholipids present in plasma purified using protein precipitation (red and green), and ISOLUTE® PLD+ Protein and Phospholipid Removal Plates (purple and black). More than 99 % of phospholipids are removed.

### Remove More Phospholipids - Get Better Sensitivity

ISOLUTE® PLD+ plates and columns deliver cleaner extracts than other phospholipid removal products, meaning lower detection limits can be achieved. In the example above, signal-to-noise using ISOLUTE PLD+ was more than double when compared with competitor products (figure 1), leading to an immediate enhancement in sensitivity. More than 99 % of phospholipids are removed as the sample passes through the multifunctional sorbent bed, leaving clean, purified extracts for analysis (figure 2).

Removing phospholipids also improves analytical column lifetime, preventing the build-up of phospholipids over multiple injections, and maintaining analyte sensitivity over extended analytical runs.

## Effective Sample Clean-up in 3 Simple Steps



**Figure 3.** Typical ISOLUTE® PLD+ procedure.

Using a simple solvent crash/filtration based procedure, proteins and phospholipids are simultaneously removed from plasma and other blood based samples while high, reproducible analyte recoveries are maintained.

The optimized frit arrangement acts as a depth filter, efficiently trapping precipitated proteins, without blocking or plugging.

## Trouble Free Processing

ISOLUTE® PLD+ products have excellent flow characteristics, and do not plug or block during use. They can be processed easily using either positive pressure or vacuum based systems, and are compatible with most automated liquid handlers. Up to 96 x 1 mL volume tabless format columns can be processed on Biotage® Pressure+ 96, Extrahera™ and VacMaster™-96 systems using specially designed racks. This cost effective option is ideal for applications with variable sample numbers or for method development.

## Ordering Information

Part Number	Description	Quantity
<b>918-0050-P01</b>	ISOLUTE® PLD+ Protein and Phospholipid Removal Plate	1
<b>918-0005-AG</b>	ISOLUTE® PLD+ Protein and Phospholipid Removal Columns, 50 mg/1 mL (tabless)	100
<b>Accessories</b>		
<b>121-5202</b>	Collection plate, 1 mL, square	50
<b>121-5203</b>	Collection plate, 2 mL, square	50
<b>121-5213</b>	Collection plate, 2 mL, round	50
<b>121-5204</b>	Piercable sealing cap	50
<b>Vacuum processing</b>		
<b>121-9600</b>	Biotage® VacMaster™-96 sample Processing manifold	1
<b>121-9601</b>	VacMaster VCU-1 Vacuum Control Unit	1
<b>121-9602</b>	VacMaster VCU-2 Vacuum Control and Generation Unit	1
<b>Positive pressure processing</b>		
<b>PPM-96</b>	Biotage® PRESSURE+ Positive Pressure Manifold, 96 position	1

### EUROPE

Main Office: +46 18 565900  
Toll Free: +800 18 565710  
Fax: +46 18 591922  
Order Tel: +46 18 565710  
Order Fax: +46 18 565705  
order@biotage.com  
Support Tel: +46 18 56 59 11  
Support Fax: + 46 18 56 57 11  
eu-1-pointsupport@biotage.com

### NORTH & LATIN AMERICA

Main Office: +1 704 654 4900  
Toll Free: +1 800 446 4752  
Fax: +1 704 654 4917  
Order Tel: +1 704 654 4900  
Order Fax: +1 434 296 8217  
ordermailbox@biotage.com  
Support Tel: +1 800 446 4752  
Outside US: +1 704 654 4900  
us-1-pointsupport@biotage.com

### JAPAN

Tel: +81 3 5627 3123  
Fax: +81 3 5627 3121  
jp\_order@biotage.com  
jp-1-pointsupport@biotage.com

### CHINA

Tel: +86 21 2898 6655  
Fax: +86 21 2898 6153  
cn\_order@biotage.com  
cn-1-pointsupport@biotage.com

To locate a distributor,  
please visit our website at  
[www.biotage.com](http://www.biotage.com)

Part Number: PPS335.V.2

© 2015 Biotage. All rights reserved. No material may be reproduced or published without the written permission of Biotage. E&OE. Product and company names mentioned herein may be trademarks or registered trademarks and/or service marks of their respective owners, and are used only for explanation and to the owners' benefit, without intent to infringe. **FOR RESEARCH USE ONLY. NOT FOR USE IN DIAGNOSTIC PROCEDURES.**

For more information visit [www.biotage.com](http://www.biotage.com).