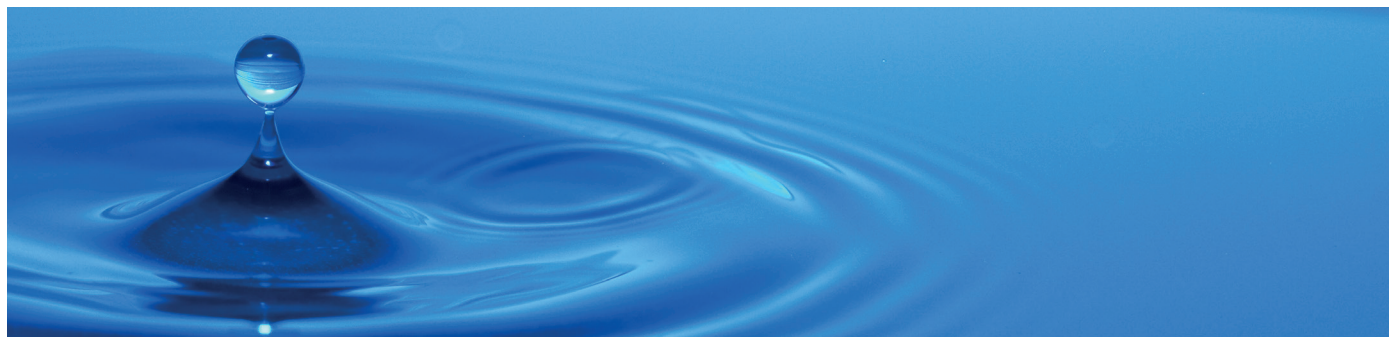


For Research Use Only. NOT for Use in Diagnostic Procedures.

ISOLUTE® ENV+ On-line SPE Cartridges

For Integrated Sample Preparation and Analysis



ISOLUTE® ENV+ has long been the sorbent of choice of solid phase extraction of polar organics from water samples, and is now available in on-line cartridge format.



ISOLUTE ENV+ is a high purity, hyper cross-linked polystyrene based polymeric sorbent with a hydroxylated surface, capable of extracting a wide range of polar, water soluble analytes from aqueous samples. Its high surface area and optimized pore structure make it ideal for extraction of very polar analytes, such as phenols and acid herbicides.

It has a very high capacity for polar compounds (up to 50% by weight for caffeine) reducing analyte breakthrough and improving recovery for even the most polar of compounds. ISOLUTE ENV+ is totally water wettable, so it will never become de-conditioned, even if it runs dry. Columns do not need to be stored in solvent after use.

Biotage ISOLUTE ENV+ On-line Cartridges combine these unique sorbent characteristics with the convenience of fully automated SPE.

Typical Applications

- » Polar Organics
- » Acid Herbicides
- » Explosives
- » Phenols

ISOLUTE® ENV+ On-line SPE Cartridges

Nominal Particle Size	40 µm
Pore Size	800 Å
Surface area	1000 m ² /g
pH Stability	1–14
Recommended Flow Rates	1–4 mL/min (typically 2–3 mL/min for loading, <1 mL/min during backflush/separation)
Maximum Operating Pressure	4000 psi

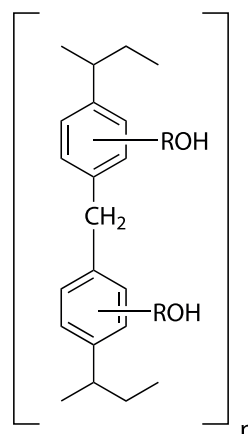


Figure 1. Structure of ISOLUTE® ENV+ sorbent.

Recommended Starting Conditions

SPE load mobile phase	0–5% aq (v/v) acetonitrile with 0.1% formic acid
SPE elution/transfer mobile phase	5–100% aq (v/v) acetonitrile with 0.1% formic acid

Ordering Information

Part Number	Description	Quantity
OSPE-916-32150	ISOLUTE® ENV+ On-line SPE cartridge 30 x 2.1 mm	1

Method Development Hints and Tips

- » To increase recovery of acidic analytes, acidify the sample using formic acid or hydrochloric acid
- » To increase the recovery of basic analytes, add ammonium hydroxide to basify the sample
- » If sample has a high particulate content, consider filtration prior to extraction
- » ISOLUTE® ENV+ has a very high surface area and is extremely rugged. ISOLUTE ENV+ on-line SPE columns will maintain performance for >200 injections per cartridge (matrix dependent).

See technical note PPS424 for additional guidance on on-line SPE-LC-MS/MS method development.



EUROPE

Main Office: +46 18 565900
Toll Free: +800 18 565710
Fax: +46 18 591922
Order Tel: +46 18 565710
Order Fax: +46 18 565705
order@biotage.com
Support Tel: +46 18 56 59 11
Support Fax: + 46 18 56 57 11
eu-1-pointsupport@biotage.com

NORTH & LATIN AMERICA

Main Office: +1 704 654 4900
Toll Free: +1 800 446 4752
Fax: +1 704 654 4917
Order Tel: +1 704 654 4900
Order Fax: +1 434 296 8217
ordermailbox@biotage.com
Support Tel: +1 800 446 4752
Outside US: +1 704 654 4900
us-1-pointsupport@biotage.com

JAPAN

Tel: +81 3 5627 3123
Fax: +81 3 5627 3121
jp_order@biotage.com
jp-1-pointsupport@biotage.com

CHINA

Tel: +86 21 2898 6655
Fax: +86 21 2898 6153
cn_order@biotage.com
cn-1-pointsupport@biotage.com

To locate a distributor,
please visit our website
www.biotage.com

Part Number: PPS422.V.1

© 2016 Biotage. All rights reserved. No material may be reproduced or published without the written permission of Biotage. Information in this document is subject to change without notice and does not represent any commitment from Biotage. E&OE. A list of all trademarks owned by Biotage AB is available at www.biotage.com/legal. Other product and company names mentioned herein may be trademarks or registered trademarks and/or service marks of their respective owners, and are used only for explanation and to the owners' benefit, without intent to infringe. **FOR RESEARCH USE ONLY. NOT FOR USE IN DIAGNOSTIC PROCEDURES.**