

TurboVap® II

Building on Solid Foundations

The new TurboVap® II is built on the solid foundations of reliability and performance that made it the market leader for solvent evaporation. The modern design incorporates many new customer driven features for easier use and expanded functionality. TurboVap II still utilizes the highly efficient patented gas vortex shearing technology, which is synonymous with the TurboVap brand.

This modern design features many new enhancements, including a well-lit glass tank for much greater visibility of the sample, improved sensors with automatic end-point detection, real-time nozzle adjustment, user replaceable nozzles, easy access drain port, and a color, menu driven touchscreen for simple operation and monitoring. The system can be vented from the bench or placed in the fume hood. Because the footprint is noticeably smaller on this modern unit, less space is required.

Through the enhanced programming features of the new TurboVap II, flow gradients can be programmed to gradually increase as evaporation occurs, decreasing the amount of time it takes to reach the desired end-point, without splashing.

Like the traditional system, racks are available to accommodate both 50 mL and 200 mL evaporation tubes, with and without the end point sensors. The new TurboVap II is designed so that it can be easily and quickly converted between the functionality of the traditional LV and II instruments if evaporation needs change, without purchasing a whole new unit.

For demanding applications involving the use of aggressive acids and bases we offer an upgraded version of the standard instrument which features a PTFE coated manifold and treated nozzles. This system is resistant to the following substances.

- » Trifluoroacetic acid (TFA) 2%
- » Trichloroacetic acid (TCA) 2%
- » Formic acid 5%
- » Acetic acid 5%
- » Butyric acid 5%
- » Phosphoric acid 5%
- » Hydrochloric acid 0.1 M
- » Nitric acid 0.1 M
- » Ammonium Hydroxide 5%
- » Triethylamine (TEA) 5%



-  Lit glass tank
-  Improved sensors
-  Smaller footprint
-  Drain port for water bath
-  Built in colour 7" touchscreen control
-  Able to store methods for regular use
-  Visual and audible alarm on evaporation completion
-  Sleep mode with automatic start-up
-  Ambient to 90 °C water bath temperature
-  Simple and intuitive software
-  Built in ventilation for installation on benchtop
-  Full sample visibility for real time monitoring

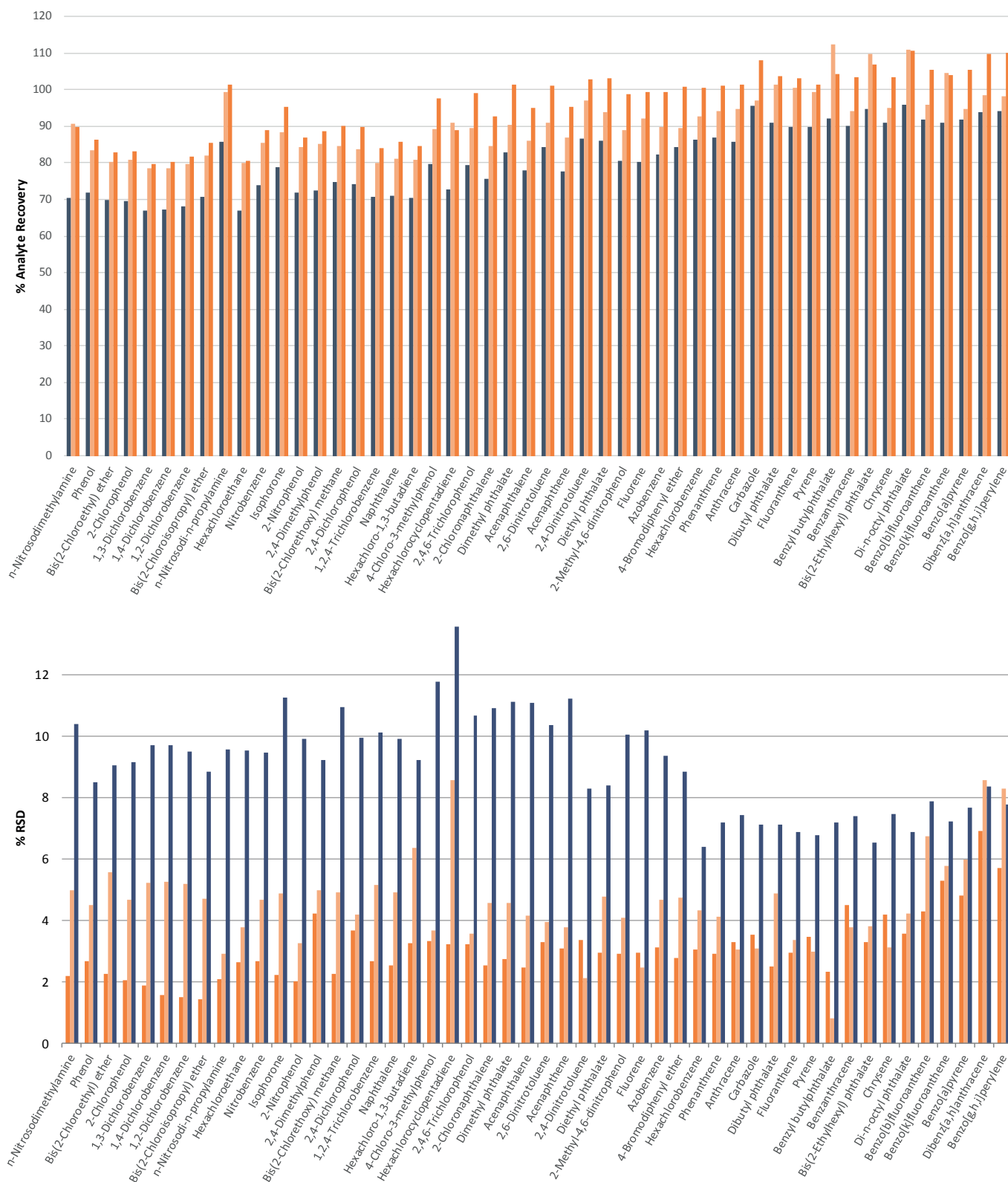


Figure 1. Recovery and RSD values on TurboVap® II for different analytes using 200 mL tubes on a 6 tube Multi Rack. Starting Volume: 180 mL; Solvent: dichloromethane; Fixed Gas Flow: 2.8 L/min (10 psi on old TurboVap); Analyte Spike Amount: 20 µg; Final Extract Volume: 1.0 mL.

■ New TurboVap® II ramped flow
■ New TurboVap® II fixed flow
■ Old TurboVap® II

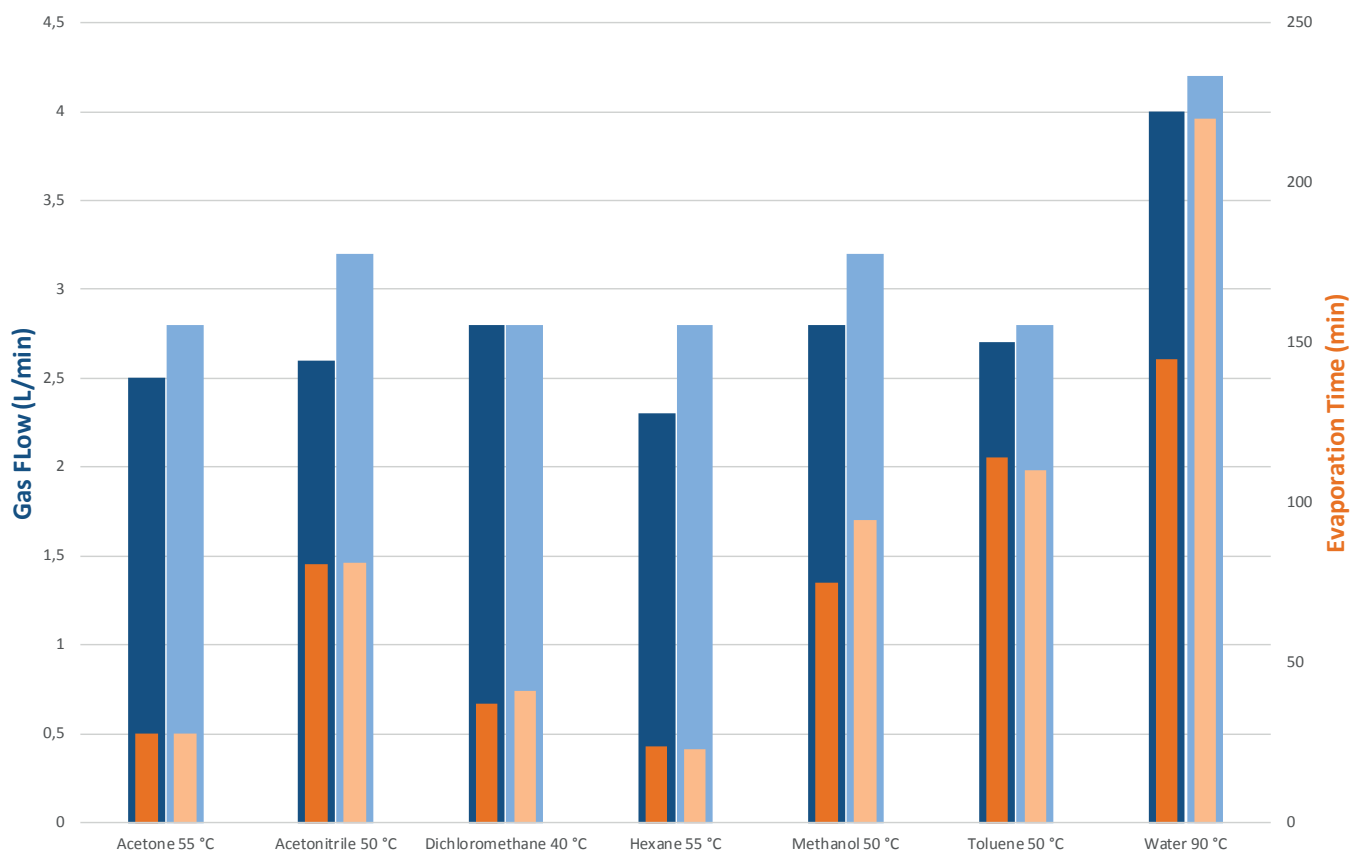


Figure 3. Comparison of evaporation times on the new vs. old TurboVap® II. The new model performs equal or better even with lower gas flows.

Gas Flow (L/min) New TurboVap® II

Evaporation Time (min) New TurboVap® II

Gas Flow (L/min) Old TurboVap® II

Evaporation Time (min) Old TurboVap® II

Ordering Information

Part Number	Description
-------------	-------------

System

415001 TurboVap II (includes 415222 manifold, but no rack). Rack must be ordered separately.



416201 TurboVap II - PTFE Coated Manifold (Rack must be ordered separately)



Gas Manifold

415222 TurboVap II Manifold (6 Nozzles)



415830SP TurboVap II Manifold (6 Nozzles) - PTFE Coated (for upgrade of 415001)



Multi Racks

415100 TurboVap II Multi Rack with End-Point Sensors (6 Positions, 200 mL Tubes)



415535 TurboVap II Multi Rack with End-Point Sensors (6 Positions, 50 mL Tubes)



415494 TurboVap II Multi Rack without End-Point Sensors (6 Positions, 50/200 mL Tubes)



Part Number	Description
-------------	-------------

Evaporation Tubes

C128506 Evaporation Tube TurboVap II 200 mL, 1 mL End-Point 12-pack



C128507 Evaporation Tube TurboVap II 200 mL, 0.5 mL End-Point 12-pack



C128508 Evaporation Tube TurboVap II 50 mL, 0.5 mL End-Point 12-pack



C128511 Evaporation Tube TurboVap II 50 mL, 1 mL End-Point 12-pack



C128512 Evaporation Tube TurboVap II 50 mL, Centrifuge 12-pack

EUROPE

Main Office: +46 18 565900
Toll Free: +800 18 565710
Fax: +46 18 591922
Order Tel: +46 18 565710
Order Fax: +46 18 565705
order@biotage.com
Support Tel: +46 18 56 59 11
Support Fax: + 46 18 56 57 11
eu-1-pointsupport@biotage.com

NORTH & LATIN AMERICA

Main Office: +1 704 654 4900
Toll Free: +1 800 446 4752
Fax: +1 704 654 4917
Order Tel: +1 704 654 4900
Order Fax: +1 434 296 8217
ordermailbox@biotage.com
Support Tel: +1 800 446 4752
Outside US: +1 704 654 4900
us-1-pointsupport@biotage.com

JAPAN

Tel: +81 3 5627 3123
Fax: +81 3 5627 3121
jp_order@biotage.com
jp-1-pointsupport@biotage.com

CHINA

Tel: +86 21 2898 6655
Fax: +86 21 2898 6153
cn_order@biotage.com
cn-1-pointsupport@biotage.com

KOREA

Tel: + 82 31 706 8500
Fax: + 82 31 706 8510
korea_info@biotage.com
kr-1-pointsupport@biotage.com

Distributors in other regions
are listed on www.biotage.com

Part Number: PPS442.V.1

© 2018 Biotage. All rights reserved. No material may be reproduced or published without the written permission of Biotage. Information in this document is subject to change without notice and does not represent any commitment from Biotage. E&OE. A list of all trademarks owned by Biotage AB is available at www.biotage.com/legal. Other product and company names mentioned herein may be trademarks or registered trademarks and/or service marks of their respective owners, and are used only for explanation and to the owners' benefit, without intent to infringe.