

For Research Use Only. NOT for Use in Diagnostic Procedures.

ISOLUTE® HYDRO DME+

Dual Mode Extraction Columns

The Fast, Affordable Way to Clean up Urine Samples for LC-MS/MS

ISOLUTE® HYDRO DME+ columns provide extremely efficient removal of matrix components and hydrolysis enzyme from urine samples, using a simple pass through workflow.

Effective Sample Clean up

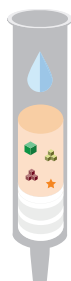
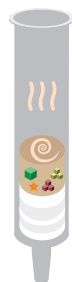
Dual mode extraction (DME) has been developed by Biotage to provide more effective removal of matrix components from urine using a combination of liquid partitioning and scavenging modes. This novel extraction technology quickly and easily removes urinary components such as pigments, salts, urea, creatinine and residual hydrolysis enzyme, leaving urine sample visually clear and reducing matrix effects.

In-Well Hydrolysis

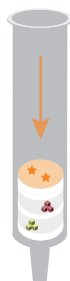
Add ACN

Elute

Apply low vacuum/positive pressure



Mix as required



Collect purified analytes

- Matrix components
- Analytes of interest
- Hydrolysis enzyme

Figure 1. ISOLUTE® HYDRO DME+ urine clean-up workflow with in-situ hydrolysis.

Compared to the dilute and shoot approach (D&S), analyte sensitivity is increased, and instrument sensitivity is maintained over multiple injections, improving assay robustness and reducing costly downtime.

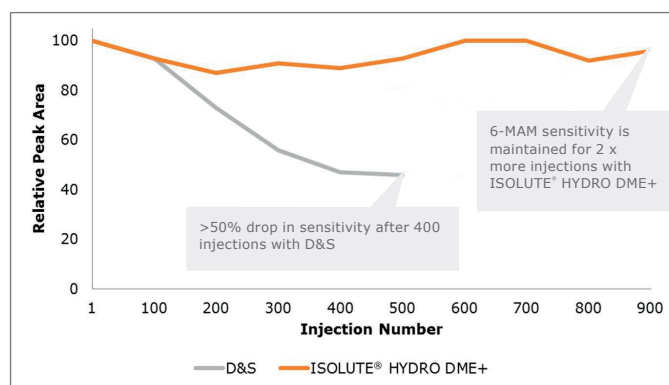


Figure 2. ISOLUTE® HYDRO DME+ maintains analyte sensitivity (area count) without significant drop off over multiple injections, whereas D&S sensitivity drops by >50% after 400 injections. This is because of effective matrix removal with ISOLUTE HYDRO DME+. In fact, ISOLUTE HYDRO DME+ maintains signal without significant drop off for more than twice as long. This implies that the time between source cleans is at least 2 x longer than with D&S.

Fast Sample Preparation

The easily automatable pass through workflow requires little to no method development. Samples can be directly injected after clean up, eliminating the need for time consuming evaporation steps.

The inclusion of Biotage® HYDRO frit technology means that urine samples can be hydrolyzed in-situ in the column, eliminating the need for post hydrolysis sample transfer steps.

No Compromise on Hydrolysis Efficiency

Because the HYDRO frit technology holds all of the sample above the sorbent bed during the elevated temperature incubation process, hydrolysis efficiency when using ISOLUTE® HYDRO DME+ is equivalent to off-line hydrolysis under the same conditions. Existing hydrolysis procedures can easily be transferred to ISOLUTE® HYDRO DME+.



Figure 3. Hydrolyzed urine before and after ISOLUTE® HYDRO DME+ clean up.



Ordering Information

Part Number	Description	Pack Size
970-0040-BZ	ISOLUTE® HYDRO DME+ 400 mg/3 mL Columns	50

EUROPE

Main Office: +46 18 565900
Toll Free: +800 18 565710
Fax: +46 18 591922
Order Tel: +46 18 565710
Order Fax: +46 18 565705
order@biotage.com
Support Tel: +46 18 56 59 11
Support Fax: + 46 18 56 57 11
eu-1-pointsupport@biotage.com

NORTH & LATIN AMERICA

Main Office: +1 704 654 4900
Toll Free: +1 800 446 4752
Fax: +1 704 654 4917
Order Tel: +1 704 654 4900
Order Fax: +1 434 296 8217
ordermailbox@biotage.com
Support Tel: +1 800 446 4752
Outside US: +1 704 654 4900
us-1-pointsupport@biotage.com

JAPAN

Tel: +81 3 5627 3123
Fax: +81 3 5627 3121
jp_order@biotage.com
jp-1-pointsupport@biotage.com

CHINA

Tel: +86 21 68162810
Fax: +86 21 68162829
cn_order@biotage.com
cn-1-pointsupport@biotage.com

KOREA

Tel: + 82 31 706 8500
Fax: + 82 31 706 8510
korea_info@biotage.com
kr-1-pointsupport@biotage.com

Distributors in other regions
are listed on www.biotage.com

Part Number: PPS474.V.2

© 2018 Biotage. All rights reserved. No material may be reproduced or published without the written permission of Biotage. Information in this document is subject to change without notice and does not represent any commitment from Biotage. E&OE. A list of all trademarks owned by Biotage AB is available at www.biotage.com/legal. Other product and company names mentioned herein may be trademarks or registered trademarks and/or service marks of their respective owners, and are used only for explanation and to the owners' benefit, without intent to infringe. **FOR RESEARCH USE ONLY. NOT FOR USE IN DIAGNOSTIC PROCEDURES.**