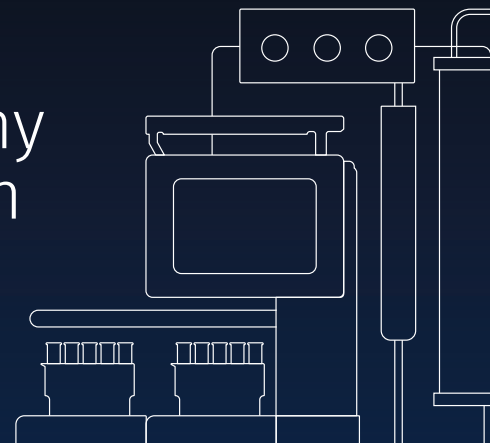


Automated flash chromatography for development and production

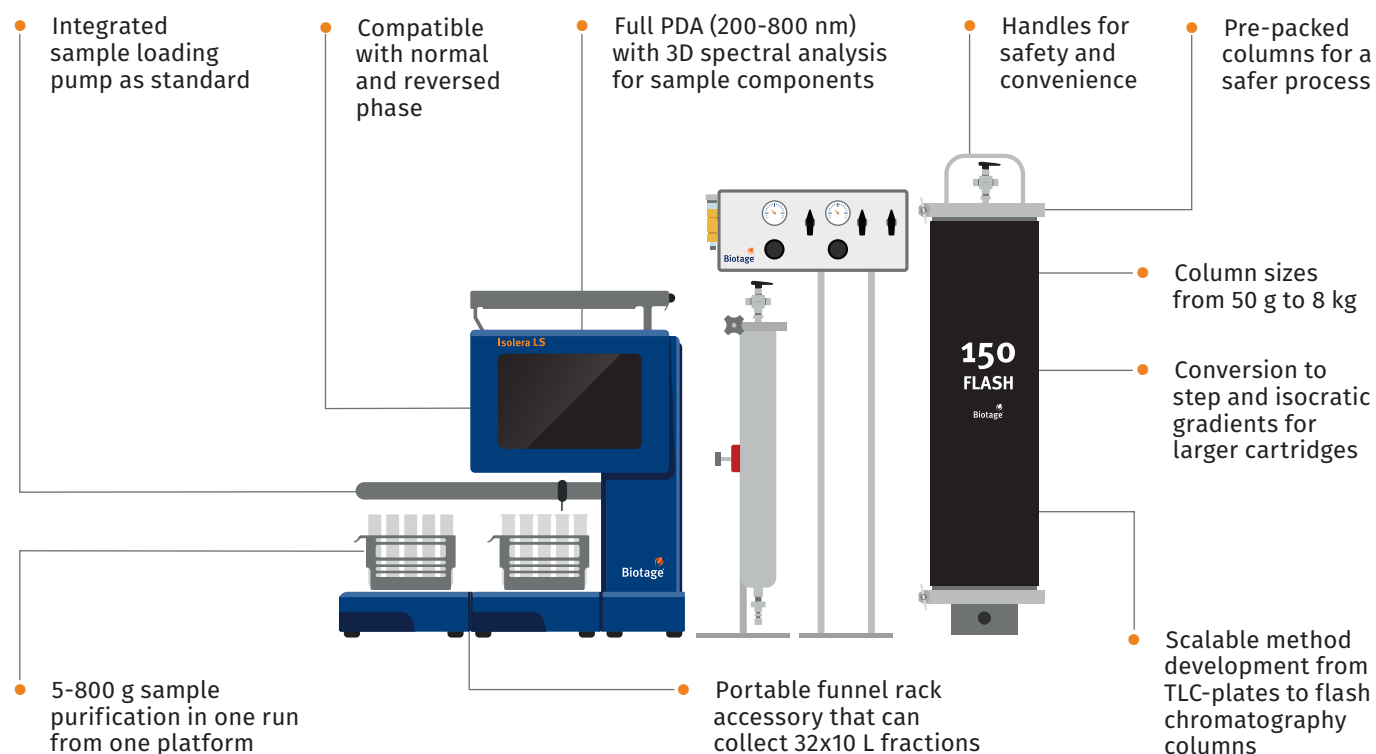
- Isolera[™] LS 150



Automated, reliable and efficient

Isolera[™] LS 150 is a fully automated flash chromatography system that allows you to bridge the gap between lab scale and production. Designed to adapt to your evolving needs, it ensures reproducibility, improves efficiency, and helps you meet deadlines with confidence. With Isolera[™] LS 150 you can eliminate uncertainty in purification and stay focused on your results.

System features



Prepare for the future with confidence

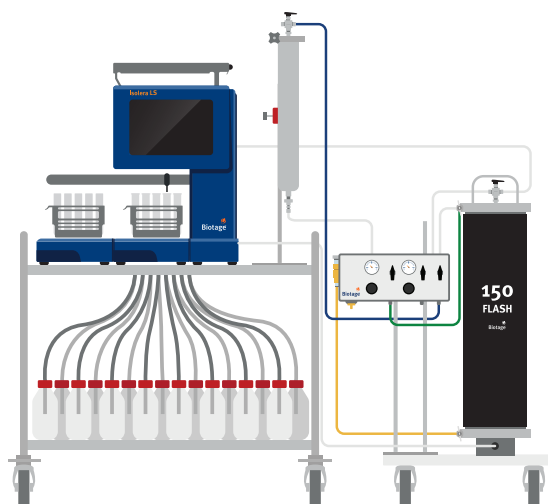
- Full gradient automation
- Column sizes from 50 g to 8 kg
- Intuitive software
- Automated fraction collection

Order Numbers

Part number	Product name	Quantity
ISO-1LSW-150M	Isolera™ LS 150M system	1
ISO-1LSW-150L	Isolera™ LS 150L system	1
ISO-1LS-150M-KIT	Upgrade connection kit for Isolera™ LS and Flash 150M system	1
ISO-1LS-150L-KIT	Upgrade connection kit for Isolera™ LS and Flash 150L system	1
419997	Flash 150M sub-assembly for Isolera™ LS	1
419998	Flash 150L sub-assembly for Isolera™ LS	1

Accessories

ISO-SPK	Isolera™ Spektra package	1
FN RK-032	Isolera™ LS funnel rack kit	1
411929	Isolera™ rack tray, 480 mL, 1/cs	2
411935	Bottles for Biotage® 480 mL bottle racks, 480 mL with caps	1



Isolera™ LS 150 with funnel rack



For local office contact information,
visit [biotage.com/contact](https://www.biotage.com/contact)

Literature Number: PPS764

© 2025 Biotage. All rights reserved. No material may be reproduced or published without the written permission of Biotage. Information in this document is subject to change without notice and does not represent any commitment from Biotage. E&OE. A list of all trademarks owned by Biotage AB is available at www.biotage.com/legal. Other product and company names mentioned herein may be trademarks or registered trademarks and/or service marks of their respective owners, and are used only for explanation and to the owners' benefit, without intent to infringe.